

BEX®
Be Xcellent

Located on the toolhousing are the model and serial numbers of your tool, please record these.
請您紀錄位於包裝盒上的工具型號與序號。

Model Number: _____
型號
Serial Number: _____
序號

WWW.BEXTOOL.COM

Made in Taiwan

BEX®

USER MANUAL

使用說明書

**CORDLESS
BELT SANDER**

鋰電無碳刷砂布帶機



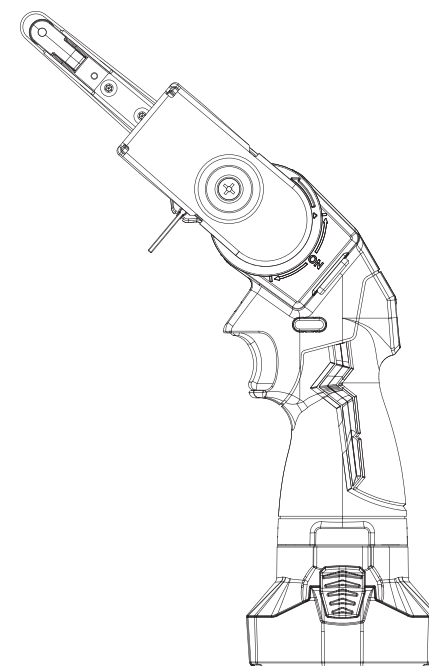
IMPROPER AND UNSAFE USE OF THIS TOOL WILL RESULT IN DEATH OR SERIOUS INJURY. IT IS VERY IMPORTANT THAT THE INTENDED OPERATOR OF THIS TOOL READS AND UNDERSTANDS THIS MANUAL BEFORE OPERATING THIS TOOL. KEEP THIS MANUAL AVAILABLE FOR OTHERS BEFORE THEY USE THE TOOL.



不當或不安全使用本工具可能導致死亡或嚴重傷害。
操作本工具的使用者務必在操作前仔細閱讀並理解本手冊內容。請將本手冊保留，供其他使用者在使用工具前參閱。

▲ **WARNING:** Please read the instructions and warnings for this tool carefully before use. Failure to do so could lead to serious injury.

▲ **重要事項:** 使用本工具前，請仔細閱讀操作說明與警告內容。
未遵守可能導致嚴重傷害。



BS06457AZ





BS10330AZ

BS13457AZ

BS19457AZ

BS20520AZ

Explanation of symbols

| | | | |
|---|---|---|---|
| Wear eye protectors | Warning | Read instruction before use | Wear hearing protectors |
|  |  |  |  |
| Direct current | Rated Revolutions per Minute (RPM) | Volts | |
| D.C. | n XXXX min ⁻¹ | V | |

Noise

The typical A-weighted noise level determined according to EN62841-2-4:

NOTE : The declared noise emission value(s) has been measured in accordance with a standard test method and may be used for comparing one tool with another.

| Mode No | BS06457AZ | BS10330AZ | BS13457AZ | BS19457AZ | BS20520AZ |
|----------------------------|----------------------|----------------------|----------------------|----------------------|----------------------|
| Dimension (L) with battery | 410mm | 349mm | 415mm | 415mm | 445mm |
| Weight with battery | 1.28kg | 1.27kg | 1.33kg | 1.32kg | 1.32kg |
| No Load RPM n° | 20000 rpm | 20000 rpm | 20000 rpm | 20000 rpm | 20000 rpm |
| Sound pressure level (LpA) | 68.4 dB(A) | 68.4 dB(A) | 68.4 dB(A) | 68.4 dB(A) | 68.4 dB(A) |
| Sound power level (LWA) | 79.4dB(A) | 79.4dB(A) | 79.4dB(A) | 79.4dB(A) | 79.4dB(A) |
| Uncertainty (K) | 3dB(A) | 3dB(A) | 3dB(A) | 3dB(A) | 3dB(A) |
| Vibration emission (ah) | 0.84m/S ² | 0.84m/S ² | 0.84m/S ² | 0.84m/S ² | 0.84m/S ² |
| Uncertainty (K) | 1.50m/S ² | 1.50m/S ² | 1.50m/S ² | 1.50m/S ² | 1.50m/S ² |

NOTE : The declared noise emission value(s) may also be used in a preliminary assessment of exposure.

▲ **WARNING** : Wear ear protection

▲ **WARNING** : The noise emission during actual use of the power tool can differ from the declared value(s) depending on the ways in which the tool is used especially what kind of workpiece is processed.

▲ **WARNING** : Be sure to identify safety measures to protect the operator that are based on an estimation of exposure in the actual conditions of use (taking account of all parts of the operating cycle such as the times when the tool is switched off and when it is running idle in addition to the trigger time).

Vibration

The vibration total value determined according to EN62841-2-4

NOTE : The declared vibration total value(s) has been measured in accordance with a standard test method and may be used for comparing one tool with another.

NOTE : The declared vibration total value(s) may also be used in a preliminary assessment of exposure.

▲ **WARNING** : The declared vibration total value(s) has been measured in accordance with a standard test method and may be used for comparing one tool with another.

▲ **WARNING** : Be sure to identify safety measure to protect the operator that are based on an estimation of exposure in the actual conditions of use (taking account of all parts of the operating cycle such as the times when the tool is switched off and when it is running idle in addition to the trigger time).

FCC

This device complies with part 15 of the FCC Rules. Operation is subject to the following two conditions:

- (1) This device may not cause harmful interference and
- (2) This device must accept any interference received, including interference that may cause undesired operation.

Table of content

| | |
|--|----|
| General Power Tool Safety Warning | 03 |
| Specific Safety Rules for Belt Sander Warnings | 05 |
| Specifications | 05 |
| Assembly and Instruction | 06 |
| Operation | 09 |
| Battery Specification & Safety | 11 |
| Battery Charger Safety | 12 |
| Maintenance | 13 |
| Trouble Shooting | 14 |

General Power Tool Safety Warning

▲ WARNING Read all safety warnings, instructions, illustrations and specifications. Failure to follow all instructions listed below may result in electric shock, fire and/or serious injury. **Save all warnings and instructions for future reference.**

The term "power tool" in the warnings refers to your mains-operated (corded) power tool or battery-operated (cordless) power tool.

Hold the power tool by insulated gripping surfaces, when performing an operation where the fastener may contact hidden wiring or its own cord. Fasteners contacting a "live" wire may make exposed metal parts of the power tool "live" and could give the operator an electric shock.

General Power Tool Safety Warnings -Work area safety

- a) **Keep work area clean and well lit.** Cluttered or dark areas invite accidents.
- b) **Do not operate power tools in explosive atmospheres, such as in the presence of flammable liquids, gases or dust.** Power tools create sparks which may ignite the dust or fumes.
- c) **Keep children and bystanders away while operating a power tool.** Distractions can cause you to lose control.

General Power Tool Safety Warnings

-Electrical safety

- a) **Power tool plugs must match the outlet. Never modify the plug in any way. Do not use any adapter plugs with earthed (grounded) power tools.** Unmodified plugs and matching outlets will reduce risk of electric shock.
- b) **Avoid body contact with earthed or grounded surfaces such as pipes, radiators, ranges and refrigerators.** There is an increased risk of electric shock if your body is earthed or grounded.
- c) **Do not expose power tools to rain or wet conditions.** Water entering a power tool will increase the risk of electric shock.
- d) **Do not abuse the cord. Never use the cord for carrying, pulling or unplugging the power tool. Keep cord away from heat, oil, sharp edges or moving parts.** Damaged or entangled cords increase the risk of electric shock.
- e) **When operating a power tool outdoors, use an extension cord suitable for outdoor use.** Use of a cord suitable for outdoor use reduces the risk of electric shock.

- f) **If operating a power tool in a damp location is unavoidable, use a residual current device (GFCI) protected supply.** Use of an GFCI reduces the risk of electric shock.

General Power Tool Safety Warnings- Personal safety

- a) **Stay alert, watch what you are doing and use common sense when operating a power tool. Do not use a power tool while you are tired or under the influence of drugs, alcohol or medication.** A moment of inattention while operating power tools may result in serious personal injury.
- b) **Use personal protective equipment. Always wear eye protection.** Protective equipment such as dust mask, non-skid safety shoes, hard hat, or hearing protection used for appropriate conditions will reduce personal injuries.
- c) **Prevent unintentional starting. Ensure the switch is in the off- position before connecting to battery, picking up or carrying the tool.** Carrying power tools with your finger on the switch or energizing power tools that have the switch on invites accidents.
- d) **Remove any adjusting key or wrench before turning the power tool on.** A wrench or a key left attached to a rotating part of the power tool may result in personal injury.
- e) **Do not overreach. Keep proper footing and balance at all times.** This enables better control of the power tool in unexpected situations.
- f) **Dress properly. Do not wear loose clothing or jewellery. Keep your hair, clothing and gloves away from moving parts.** Loose clothes, jewellery or long hair can be caught in moving parts.
- g) **If devices are provided for the connection of dust extraction and collection facilities, ensure these are connected and properly used.** Use of dust collection can reduce dust-related hazards.
- h) **Do not let familiarity gained from frequent use of tools allow you to become complacent and ignore tool safety principles.** A careless action can cause severe injury within a fraction of a second.
- i) **Always wear protective goggles to protect your eyes from injury when using power tools. The goggles must comply with ANSI Z87.1 in the USA, EN 166 in Europe, or AS/NZS 1336 in Australia/New Zealand. In Australia/New Zealand, it is legally required to wear a face shield to protect your face, too.**

General Power Tool Safety Warnings- Power tool use and care

- a) **Do not force the power tool. Use the correct power tool for your application.** The correct power tool will do the job better and safer at the rate for which it was designed.
- b) **Do not use the power tool if the switch does not turn it on and off.** Any power tool that cannot be controlled with the switch is dangerous and must be repaired.
- c) **Disconnect plug from the power source and/or the battery pack from the power tool before making any adjustments, changing accessories, or storing power tools.** Such preventive safety measures reduce the risk of starting the power tool accidentally.
- d) **Store idle power tools out of the reach of children and do not allow persons unfamiliar with the power tool or these instructions to operate the power tool.** Power tools are dangerous in the hands of untrained users.
- e) **Maintain power tools. Check for misalignment or binding of moving parts, breakage of parts and any other condition that may affect the power tool's operation. If damaged, have the power tool repaired before use.** Many accidents are caused by poorly maintained power tools.
- f) **Keep cutting tools sharp and clean.** Properly maintained cutting tools with sharp cutting edges are less likely to bind and are easier to control.
- g) **Use the power tool, accessories and tool bits etc. in accordance with these instructions, taking into account the working conditions and the work to be performed.** Use of the power tool for operations different from those intended could result in a hazardous situation.
- h) **Keep handles and grasping surfaces dry, clean and free from oil and grease.** Slippery handles and grasping surfaces do not allow for safe handling and control of the tool in unexpected situations.

General Power Tool Safety Warnings-Battery tool use and care

- a) **Recharge only with the charger specified by the manufacturer.** A charger that is suitable for one type of battery pack may create a risk of fire when used with another battery pack.
- b) **Use power tools only with specifically designated battery packs.** Use of any other battery packs may create a risk of injury and fire.
- c) **When battery pack is not in use, keep it**

away from other metal objects, like paper clips, coins, keys, nails, screws or other small metal objects, that can make a connection from one terminal to another. Shorting the battery terminals together may cause burns or a fire.

- d) **Under abusive conditions, liquid may be ejected from the battery; avoid contact. If contact accidentally occurs, flush with water. If liquid contacts eyes, additionally seek medical help.** Liquid ejected from the battery may cause irritation or burns.
- e) **Do not use a battery pack or tool that is damaged or modified.** Damaged or modified batteries may exhibit unpredictable behavior resulting in fire, explosion or risk of injury.
- f) **Do not expose a battery pack or tool to fire or excessive temperature.** Exposure to fire or temperature above 130°C may cause explosion.
- g) **Follow all charging instructions and do not charge the battery pack or tool outside the temperature range specified in the instructions.** Charging improperly or at temperatures outside the specified range may damage the battery and increase the risk of fire.

General Power Tool Safety Warnings-Service

- a) **Have your power tool serviced by a qualified repair person using only identical replacement parts.** This will ensure that the safety of the power tool is maintained.
- b) **Never service damaged battery packs.** Service of battery packs should only be performed by the manufacturer or authorized service providers.

Specific Safety Rules for Belt Sander Warnings

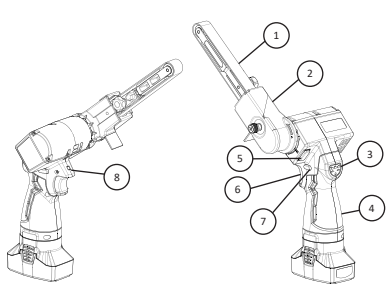
- **Hold power tool by insulated gripping surfaces, when performing an operation where the cutting accessory may contact hidden wiring.** Cutting accessory contacting a "live" wire may make exposed metal parts of the power tool "live" and could give the operator an electric shock.
- **Know your power tool. Read operator's manual carefully. Learn its applications and limitations, as well as the specific potential hazards related to this power tool.** Following this rule will reduce the risk of electric shock, fire, or serious injury.
- **Always wear eye protection with side shields marked to comply with ANSI Z87.1 when assembling parts, operating the tool, or performing maintenance.** Following this rule will reduce the risk of serious personal injury.
- **Protect your lungs. Wear a face or dust mask if the operation is dusty.** Following this rule will reduce the risk of serious personal injury.
- **Protect your hearing. Wear hearing protection during extended periods of operation.** Following this rule will reduce the risk of serious personal injury.
- **Battery tools do not have to be plugged into an electrical outlet; therefore, they are always in operating condition. Be aware of possible hazards when not using your battery tool or when changing accessories.** Following this rule will reduce the risk of electric shock, fire, or serious personal injury.
- **Do not place battery tools or their batteries near fire or heat.** This will reduce the risk of explosion and possibly injury.
- **Do not crush, drop or damage battery pack. Do not use a battery pack or charger that has been dropped or received a sharp blow.** A damaged battery is subject to explosion. Properly dispose of a dropped or damaged battery immediately.
- **Batteries can explode in the presence of a source of ignition, such as a pilot light.** To reduce the risk of serious personal injury, never use any cordless product in the presence of open flame. An exploded battery can propel debris and chemicals. If exposed, flush with water immediately.
- **Do not charge battery tool in a damp or wet location. Do not use, store, or charge battery packs or products in locations where the temperature is less than 10° or more than 37°. Do not store outside or in vehicles.**

- **Under extreme usage or temperature conditions, battery leakage may occur. If liquid gets into your eyes, flush them with clean water liquid comes in contact with for at least 10 minutes, then seek immediate medical attention.** Following this rule will reduce the risk of serious personal injury.
- **Inspect for and remove all nails from lumber before using this tool.** Following this rule will reduce the risk of serious personal injury.
- **Save these instructions.** Refer to them frequently and use them to instruct others who may use this tool. If you loan someone this tool, loan them these instructions also.
- **Hold the power tool by insulated gripping surfaces, because the sanding surface may contact its own cord.** Cutting a "live" wire may make exposed metal parts of the power tool "live" and could give the operator an electric shock.

Specification

| | | | | | |
|-------------------------------------|---------------------------------|---------------------------------|---------------------------------|---------------------------------|---------------------------------|
| Model No | BS06457AZ | BS10330AZ | BS13457AZ | BS19457AZ | BS20520AZ |
| Dimension (L) with battery | 410mm | 349mm | 415mm | 415mm | 445mm |
| Weight with battery | 1.28Kg | 1.27Kg | 1.33Kg | 1.32Kg | 1.32Kg |
| Beltsize (WxL) | 6.5x 457 (mm) 1/4" x 18"(in) | 10 x 330 (mm) 3/8" x 13"(in) | 13 x 457 (mm) 1/2" x 18"(in) | 19 x 457 (mm) 3/4" x 18"(in) | 20 x 520 (mm) 3/4" x 18"(in) |
| Belt free speed (RPM no) | 20,000RPM | | | | |
| Belt surface feet per minute (SFPM) | 4,353 SFPM | | | | |
| Battery voltage | 14.4V d.c. | | | | |

Functional Description



| | |
|------------------------|----------------------|
| 1. Sanding belt | 5. Adjustment button |
| 2. Arm protective seat | 6. Trigger |
| 3. Indicator Light | 7. Trigger lock |
| 4. Handle | 8. LED |

ASSEMBLY and Instruction

▲ **WARNING** : To reduce the risk of serious personal injury, turn unit off and remove the battery pack before making any adjustments or removing / installing attachments or accessories.

An accidental start-up can cause injury

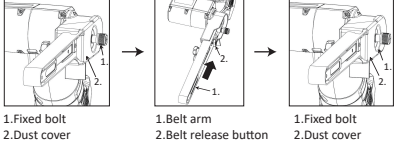
Removing/Inserting the Battery

To remove the battery, push in the release buttons and pull the battery pack away from the tool.

To insert the battery, slide the pack into the body of the tool. Make sure it latches securely into place.

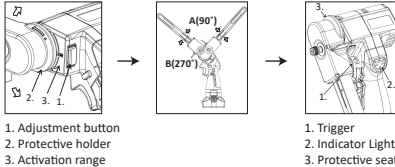
- ▲ **Always remove battery pack before changing or removing accessories.**
- **Only use accessories specifically recommended for this tool. Others may be hazardous.**

Installing/Removing Abrasive Belt



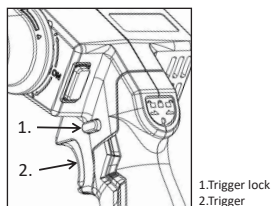
- Loosen the fixed bolt counterclockwise and remove the dust cover in the direction of the arrow.
- Push the Belt arm inwards until you hear a clicking sound, at which point the belt will be in an unfastened state. Remove the old belt and install a new one. Press the Belt release button to release the Belt arm and put the belt in a fastened state.
- Reattach the dust cover in the direction of the arrow and tighten the fixed bolt clockwise to complete the sanding belt replacement.

Adjusting Arm Inclination



- Adjust the angle of the protective seat by pressing the protective seat adjustment button, release the button when it reaches the target position.
- Fine-tune it until the button pops up to complete the adjustment.
- The range of adjustment is 360° with 30° angular displacement per positioning point. Activated range A (90°), inactivated range B (270°), Adjust the angle to make a comfortable working position.
- When pressing the trigger at an inactivated angle of the protective holder, the indicator light will turn red to remind the user to adjust the holder's angle.

Switching between LOCK-OFF and UNLOCK



▲ WARNING : For your safety, this tool is equipped with the lock-off switch which prevents the tool from unintended starting. NEVER use the tool if it runs when you simply pull the switch trigger without releasing the lock-off switch. Return the tool to our authorized service center for proper repairs BEFORE further usage.

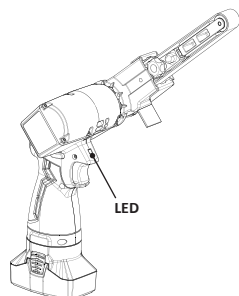
▲ CAUTION: Before installing the battery cartridge into the tool, always check to see that the switch trigger actuates properly and returns to the "OFF" position when released. Operating a tool with a switch that does not actuate properly can lead to loss of control and serious personal injury.

- Press the LOCK-OFF & UNLOCK buttons to switch between LOCK-OFF(🔒) and UNLOCK(🔓) mode, when in LOCK-OFF(🔒) mode, press the trigger switch unable to start the tool, when in UNLOCK(🔓) mode, Press the trigger switch to activate the tool.
- To start the tool, pull the trigger switch. Release the trigger switch to stop.

Lighting up the LED

▲ CAUTION: Do not look in the light or see the source of light directly.

Pull the trigger to turn on the LED. To turn off, release it. The lamp goes out approximately 10 seconds after releasing the trigger



Operation

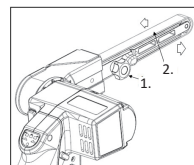
▲ WARNING : To reduce the risk of serious personal injury, turn unit off and remove the battery pack before making any adjustments or removing / installing attachments or accessories. An accidental start-up can cause injury.

▲ CAUTION: Be sure that not any part of the sanding belt is placed on the surface of workpiece before you turn the tool on or off. Otherwise a poor sanding finish, damage to the belt or loss of control of the tool may result.

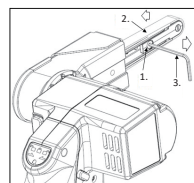
▲ CAUTION: Avoid body contact with the belt and rotating parts of the tool during operation. Always be aware of your surroundings and bystanders, and stay alert for possible hazards.

▲ CAUTION: Do not attempt to hold and operate the tool upside down. It may cause a serious accident resulting in personal injury.

Abrasive Belt Calibration

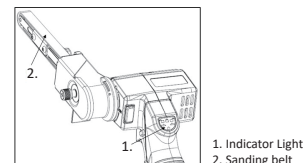


While the tool BS13457AZ、BS06457AZ、BS19457AZ is running, rotating the Plastic head cap bolt can move the sanding belt to the left (right), adjusting it to the correct position for calibration.



While the tool BS10330AZ is running, use a Hex key (2mm) to rotate and adjust the adjustment screw to move the abrasive belt to the left (right) and adjust it to a moderate position to complete the correction.

Indicator Light

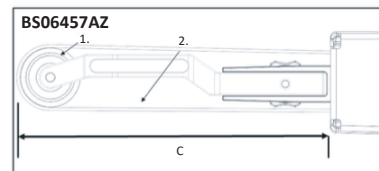


When the indicator light is flashing, please follow the instructions below to proceed.

- Flashing once: Battery power is low. Please replace the battery.
- Flashing twice: Please leave the tool for a few minutes before activating it.
- Flashing three times: Restart after readjusting the tool's working position.
- No flashing: If the tool cannot be activated, switch the tool to LOCK-OFF mode and try rotating the sanding belt before activating again.
- After repeating the above steps and still unable to activate the tool, please send it for repair and inspection.

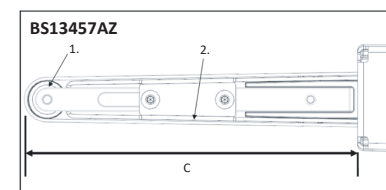
Sanding Range

- Turn the tool on and wait until it attains full speed. Hold the tool firmly by one hand. Gently apply the tool to the workpiece surface and move the tool forward and backward.



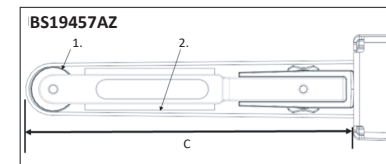
1. Front roller 2. Grinding area

Front roller and flat seat set the grinding position of the tool. Please grind the workpiece within range C.



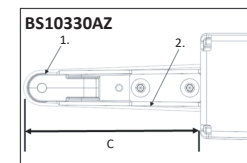
1. Front roller 2. Flat seat abrasive belt

Front roller and flat seat set the grinding position of the tool. Please grind the workpiece within range C.



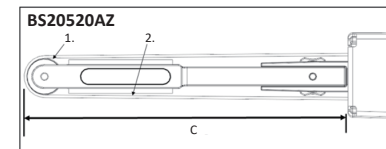
1. Front roller 2. Flat seat abrasive belt

Front roller and flat seat set the grinding position of the tool. Please grind the workpiece within range C.



1. Front roller 2. Flat seat abrasive belt

Front roller and flat seat set the grinding position of the tool. Please grind the workpiece within range C.



1. Front roller 2. Flat seat abrasive belt

Front roller and flat seat set the grinding position of the tool. Please grind the workpiece within range C.

Battery Specification & Safety

| EB14020-A1 | |
|----------------|-----------------------------|
| Rated Voltage | 14.4V |
| Rated Capacity | 2Ah |
| Cell type | Li-ion |
| Dimension | L x W x H 89x60x105 (mm) |

- Do not throw the battery into fire, nor heat the battery.
- Do not disassemble nor modify the battery Pack.
- Do not leave the battery in a place of high temperature. (60°C or more)
- To prevent the battery from water or moisture.
- Do not add strong shock, nor drop the battery.
- Do not solder lead directly to the battery body.
- Do not heat nor solder the terminals of the battery.
- Do not short “+” and “-” terminal of the battery with a kind of metal.
- Do not charge beyond the condition which described on the delivery specification.
- Do not reverse-charge or reverse-connect the battery.
- When recharging, please use a special charger (EC1412-A1).
- Please regularly check the battery capacity. When the voltage of the battery is lower than the terminal voltage, its capacity may drop and cannot be recovered.
- If the battery is stored over 3 months, it should be checked again about the remaining capacity and charge the battery.

Remarks: Please refer to the technical data sheet for the battery specifications.

Charger Specification & Safety


| Battery Charger Specification | |
|-------------------------------|--------------------------------|
| Charger | EC1412-A1 |
| Battery mode | EB14020-A1 |
| Output voltage | 16.6V |
| Protection class | Electrical protection class II |
| AC supply voltage | 100VAC~240VAC |
| Mains frequency | 50Hz~60Hz |
| Operating Temperature | 0°C to 45°C |
| Storage Temperature | -20°C to 70°C |

| State of Charge indicator | | | |
|---------------------------|-----------------------------------|------------------------|---------------------------------|
| | State | Red LED | Green LED |
| 1 | Stand-by Mode | OFF | flashes (0.5sec ON, 0.5sec OFF) |
| 2 | Battery Pack Install And Charging | ON | OFF |
| 3 | CV Constant voltage charging mode | OFF | flashes (0.1sec ON, 0.1sec OFF) |
| 4 | CC Constant current charging mode | ON | OFF |
| 5 | Charging complete | OFF | ON |
| 6 | Temperature protection | Red LED flashes | |
| 7 | Abnormal Protection | Red & Green LED all on | |

Battery Charger Safety

- **Keep work area clean and well lit.** Cluttered and dark areas invite accidents.
- **Do not operate the appliance in explosive atmospheres, such as in the presence of flammable liquids, gases or dust.** Chargers can cause sparks which may ignite dust or fumes.
- **Keep children and other persons away from the area while the charger is in use.**
- **The supply cord plug must match the outlet. Modification of the plug in any way is not permissible.** Unmodified plugs and corresponding power outlets reduce the risk of electric shock.
- **Avoid body contact with earthed or grounded surfaces such as pipes, radiators, ranges and refrigerators.** There is an increased risk of electric shock if your body is earthed or grounded.
- **Do not abuse the supply cord. Never use the supply cord to carry, pull or unplug the appliance. Keep the cord away from heat, oil, sharp edges or moving parts.** Damaged or entangled cords increase the risk of electric shock.
- **Only use the battery charger in areas which are dry.** Water entering an electric appliance increases the risk of electric shock.
- **Use the charger only to charge the batteries approved for use with this charger.**
- **Do not use a charger if its casing or electric supply cord is defective.**
- **Store chargers out of reach of children when not in use. Do not allow persons unfamiliar with the appliance or these instructions to operate it.** Chargers are dangerous in the hands of untrained users.
- **Maintain the appliance carefully. Check to ensure that no parts are broken or damaged in such a way that the appliance can no longer function correctly. If damaged, have the appliance repaired before use.**
- **Use chargers and the corresponding batteries in accordance with these instructions and as is specified for this particular model.** Use of chargers for applications different from those intended could result in hazardous situations.
- **Recharge only with the charger specified by the manufacturer.** A charger that is suitable for one type of battery pack may create a risk of fire when used with another battery pack.
- **When not in use, keep the battery and the charger away from paper clips, coins, keys, nails, screws or other small metal objects that could cause a short circuit at the battery terminals or the charging contacts.** A short circuit at the battery terminals or charging contacts could result in personal injury (burns) or fire.
- **Under abusive conditions, liquid may be ejected from the battery, avoid contact with the liquid. If contact accidentally occurs, flush with water. If the liquid comes into contact with the eyes also consult a doctor.** Liquids ejected from the battery may cause irritation or burns.
- **Take care to ensure that the charger is standing in a steady, secure position.** A falling battery or charger may present a risk of injury to yourself or others.
- **Avoid touching the contacts.**
- **Batteries that have reached the end of their life must be disposed of safely and correctly to avoid environmental pollution.**
- **This appliance is not intended for use by persons (including children) with reduced physical, sensory or mental capabilities, or lack of experience and knowledge, unless they have been given super-vision or instruction concerning use of the appliance by a person responsible for their safety.**
- **Children must be instructed not to play with the appliance.**
- **Take care to ensure that the batteries suffer no mechanical damage**

- Do not charge or continue to use damaged batteries (e.g. batteries with cracks, broken parts, bent or pushed-in and/or pulled-out contacts).

-  Do not touch the supply cord or extension cord if they are damaged while working. Disconnect the supply cord plug from the power outlet. Damaged supply cords or extension cords present a risk of electric shock.

- Never operate the appliance when it is dirty or wet. Under unfavorable conditions, dampness or dust adhering to the surface of the appliance, especially dust from conductive materials, may present a risk of electric shock. Dirty or dusty appliances should thus be checked at a service center at regular intervals, especially if used frequently for working on conductive materials.

Maintenance

▲WARNING: To reduce the risk of injury, always unplug the charger and remove the battery pack from the charger or tool before performing any maintenance. Never disassemble the tool, battery pack or charger. Contact a Service facility for ALL repairs.

Maintaining Tool

- Keep your tool, battery pack and charger in good repair by adopting a regular maintenance program.
- Inspect your tool for issues such as undue noise, misalignment or binding of moving parts, breakage of parts, or any other condition that may affect the tool operation.
- Return the tool, battery pack, and charger to a Service for dealers.
- If the tool does not start or operate at full power with a fully charged battery pack, clean the contacts on the battery pack.
- If the tool still does not work properly return the tool, charger and battery pack, to a service facility for repairs.

▲WARNING: To reduce the risk of personal injury and damage, never immerse your tool, battery pack or charger in liquid or allow a liquid to flow inside them.

Cleaning

- Clean dust and debris from vents.
- Keep handles clean, dry and free of oil or grease.
- Use only mild soap and a damp cloth to clean, since certain cleaning agents and solvents are harmful to plastics and other insulated parts.
- Some of these include gasoline, turpentine, lacquer thinner, paint thinner, chlorinated cleaning solvents, ammonia and household detergents containing ammonia.
- Never use flammable or combustible solvents around tools.

Repairs

For repairs, return the tool, battery pack and charger to the nearest service center.


Trouble Shooting

| Symptom | Possible cause | Fix |
|---|---|---|
| Continuously blinks once | ■ Low / under battery voltage protection | ■ Charger or replace battery |
| Continuously blinks 2 times | ■ Tool battery temperature protection ■ Tool motor temperature protection ■ Tool board control protection | ■ Remove battery, wait temperature recover and reinsert battery |
| Continuously blinks 3 times | ■ The tool was overloaded briefly | ■ Release the trigger switches and the press it again. Contact Service if the problem persists. |
| The tool doesn't work and the battery status not displayed blinks | ■ Tool motor control abnormal. | ■ Release the control switches and remove battery Press the belt only lightly on the workpiece move back and forth Inserting the battery press trigger switch ■ Contact Service if the problem persists. |
| For failure other than above situation, please stop using the tool and contact your local dealer for service. | | |

Tel:+886-4-2359-8877

Address:No. 24, 36th Road, Taichung Industrial Park Taichung, Taiwan

符號說明

| | | | |
|---|---|---|---|
| 佩戴護目鏡 | 警告 | 使用前請先詳讀說明書 | 佩戴聽力保護裝置 |
|  |  |  |  |
| 直流電 | 每分鐘轉速 | 伏特 | |
| D.C. | $n \text{ XXXX min}^{-1}$ | V | |

噪音

根據 EN62841-2-4 標準測定的
典型 A 加權噪音級：

注意：所聲明的噪音排放值是依
據標準測試方法測得的，可用於
比較不同工具之間的噪音等級。
注意：所聲明的噪音排放值亦可
用於初步評估暴露情況。

| 型號 | BS06457AZ | BS10330AZ | BS13457AZ | BS19457AZ | BS20520AZ |
|-------------|----------------------|----------------------|----------------------|----------------------|----------------------|
| 尺寸(含電池) | 410mm | 349mm | 415mm | 415mm | 445mm |
| 重量(含電池) | 1.28Kg | 1.27kg | 1.33kg | 1.32kg | 1.32kg |
| 空載轉速 n_0 | 20000 rpm | 20000 rpm | 20000 rpm | 20000 rpm | 20000 rpm |
| 聲壓級 | 68.4 dB(A) | 68.4 dB(A) | 68.4 dB(A) | 68.4 dB(A) | 68.4 dB(A) |
| 聲功率級 | 79.4 dB(A) | 79.4 dB(A) | 79.4 dB(A) | 79.4 dB(A) | 79.4 dB(A) |
| 不確定性的測量 (K) | 3dB(A) | 3dB(A) | 3dB(A) | 3dB(A) | 3dB(A) |
| 振動產生值 (ah) | 0.84m/S ² | 0.84m/S ² | 0.84m/S ² | 0.84m/S ² | 0.84m/S ² |
| 不確定性的測量 (K) | 1.50m/S ² | 1.50m/S ² | 1.50m/S ² | 1.50m/S ² | 1.50m/S ² |

- ▲ 警告：請佩戴聽力保護裝置
- ▲ 警告：實際使用電動工具時的噪音排放可能會因工具的使用方式，尤其是加工的工件類型而與聲明值有所不同。
- ▲ 警告：確保根據實際使用條件(包括工具關閉時、空轉時以及觸發時的所有操作循環部分)估算暴露情況，制定保護操作員的安全措施。

振動

根據 EN62841-2-4 標準測定的總振動值：

注意：所聲明的總振動值是依據標準測試方法測得的，可用於比較不同工具之間的振動程度。
注意：所聲明的總振動值亦可用於初步評估暴露情況。

- ▲ 警告：所聲明的總振動值是依據標準測試方法測得的，可用於比較不同工具之間的振動程度。
- ▲ 警告：確保根據實際使用條件(包括工具關閉時、空轉時以及觸發時的所有操作循環部分)估算暴露情況，制定保護操作員的安全措施。

聯邦通訊委員會(FCC)

本設備符合聯邦通信委員會(FCC)規則第 15 部分。操作必須符合以下兩個條件：

- (1) 本設備不會造成有害干擾訊號，並且
- (2) 本設備必須接受任何接收到的干擾，包括可能導致不良操作的干擾。

目錄

| | |
|---------------|----|
| 一般電動工具安全警告 | 17 |
| 砂布帶機的專用安全規則警告 | 18 |
| 規格 | 19 |
| 組裝與說明 | 19 |
| 操作 | 20 |
| 電池規格與安全使用事項 | 22 |
| 電池充電器安全使用事項 | 23 |
| 維護保養 | 24 |
| 故障排除 | 25 |

一般電動工具安全警告

▲警告：請閱讀所有的安全警告、使用說明、圖片和規格。未遵守以下所有的使用說明可能導致觸電、引發火災或造成嚴重受傷。請保留所有的警告和使用說明以供日後參考。

在警告中，「電動工具」指的是您的插電式電動工具或電池式電動工具。

在進行緊固件可能接觸到隱藏的電線或自身電線的操作時，請握住絕緣的握住表面來使用電動工具。緊固件接觸到「帶電」的電線可能會使電動工具的裸露金屬部分「通電」，並可能會使操作人員觸電。

一般電動工具安全警告-工作場地安全

- a) 保持工作區域清潔且良好照明。雜亂或昏暗的區域容易引發事故。
- b) 請勿在易爆炸環境中操作電動工具，例如存有易燃液體、氣體或粉塵的地方。電動工具會產生火花，可能引燃粉塵或煙霧。
- c) 操作電動工具時，請讓兒童和旁觀者遠離。分心可能讓您無法安全操作工具。

一般電動工具安全警告-用電安全

- a) 請勿以任何方式修改插頭，電動工具的插頭必須與插座相匹配。需接地的電動工具不能使用任何轉接插頭。未經修改的插頭和匹配的插座能降低電擊危險。
- b) 避免身體與接地的表面(如管道、散熱器、爐具和冰箱)接觸。如果接觸接地的表面，會增加電擊危險。
- c) 不要將電動工具暴露於雨水或潮濕環境中。若有水進入電動工具會增加電擊危險。
- d) 不得以錯誤方式使用電源線。切勿使用電線進行搬運、拉扯或拔出電動工具。電線應遠離熱源、油、鋒利邊緣或活動零件。損壞或纏繞的電線會增加電擊危險。
- e) 在戶外操作電動工具時，請使用適合戶外使用的延長線。使用戶外專用的電線可以降低觸電的風險。
- f) 若無法避免在潮濕的地方操作電動工具，請使用漏電保護裝置(GFCI)。使用GFCI可降低觸電的風險。

一般電動工具安全警告：人身安全

- a) 在操作電動工具時，請保持警覺，依據常識判斷當下作業需求和環境。不要在疲倦或受藥物、酒精或藥品影響時使用電動工具。在操作電動工具時，瞬間的疏忽可能導致嚴重人身傷害。

b) 用個人防護設備。始終佩戴護目鏡。在適當條件下佩戴防塵口罩、穿上防滑安全鞋、戴安全帽或聽力保護裝備等防護設備，可以有效減少人身傷害。

c) 防止工具意外啟動。在連接電池、拿起工具，搬運工具前，請確保開關處於關閉狀態。搬運電動工具時手指放在開關上或開關處於通電狀態時容易引發事故。

d) 在電動工具接通之前，取下所有定位鍵或扳手。遺留在電動工具旋轉零件上的扳手或定位鍵有可能會導致人身傷害。

e) 請避免伸手去拿取工具。時刻注意立足點和身體平衡。以確保在意外情況下能妥善控制電動工具。

f) 著裝適當。不要穿著寬鬆衣物或佩戴飾品。請將頭髮、衣物和手套遠離活動零件。寬鬆衣物、飾品或長髮可能會捲入活動零件當中。

g) 如果提供了與排屑、集塵設備連接用的裝置，要確保他們連接完好且使用得當。使用集塵設備可減少因塵屑引起的危險。

h) 請勿因頻繁使用本工具而自認熟練導致您大意輕忽工具的安全原則。一時的疏忽隨即會造成人身重傷。

i) 使用電動工具時，請務必佩戴護目鏡，以防眼睛受到傷害。護目鏡需符合美國 ANSI Z87.1 標準、歐洲 EN 166 標準或澳洲／紐西蘭 AS/NZS 1336 標準。若於澳洲／紐西蘭地區，法定需佩戴面罩以保護臉部。

一般電動工具安全警告-電動工具使用和注意事項

- a) 使用電動工具時請勿用蠻力。根據用途使用適當的電動工具。選擇具有適當設計額定值的電動工具使您工作更有效率、更安全。
- b) 如果電動工具的開關無法接通或關閉，請勿使用該工具。任何無法通過開關控制的電動工具都是危險的，且必須進行修理。
- c) 在進行任何調整、更換配件或貯存電動工具之前，請先將插頭從電源上拔掉，或將電池組從電動工具上取下。這些預防性安全措施能降低意外啟動電動工具的危險。
- d) 閒置的電動工具貯存在兒童無法拿到的地方，並且不要讓不熟悉該電動工具或對這些說明不了解的人操作它。讓未經訓練的使用者操作電動工具是相當危險的。
- e) 保養電動工具。檢查活動零件是否對準或卡住，零件是否損壞，以及其他可能影響電動工具運轉的情況。如果發現損壞，請在使用前進行修理。許多事故都是由於電動工具維護不善所造成的。
- f) 保持切削刀具鋒利和清潔。保養良好的有鋒利切削刃的刀具不易被卡住而且容易控制。

- g) 按照使用說明書，考慮作業條件和進行的作業來使用電動工具、配件和工具的刀頭等。將電動工具用於那些與其用途不符的操作可能會導致危險。
- h) 把手及握持區應保持乾燥、潔淨，且不得沾染任何油液或油脂。易滑脫的把手及握持區將無法讓您在發生意外狀況時安全地抓緊並控制工具。

一般電動工具安全警告-電池式工具使用和注意事項

- a) 僅使用原廠指定的充電器充電。將適用於某種電池組的充電器用到其他電池組時會引發火災風險。
- b) 只有在配有專用電池組的情況下才使用電動工具。使用其他電池組可能會發生損壞和火災風險。
- c) 當電池組未使用時，請將其遠離其他金屬物品，如迴紋針、硬幣、鑰匙、釘子、螺絲或其他小型金屬物品，以防一端與另一端連接。電池端部短路會引起燃燒或火災。
- d) 在不當的使用情況下，電池可能會釋放液體，請避免接觸之。如不慎接觸，請用清水沖洗。如液體接觸眼睛，請立即就醫。電池釋放的液體可能會引起刺激或灼傷。
- e) 請勿使用損壞或改裝過的電池組或工具。損壞或改裝過的電池可能會出現無法預期的反應，導致火災、爆炸或人身受傷風險。
- f) 請勿將電池組或工具暴露於火源或高溫環境中。暴露於火源或高於130°C的溫度可能會導致爆炸。
- g) 請遵循所有充電指示，並勿在說明書指定的溫度範圍外對電池組或工具進行充電。不當充電或在超出指定溫度範圍內充電，可能會損壞電池並增加火災風險。

一般電動工具安全警告-維修

- a) 請由合格的維修人員使用相同的替代零件來維修您的電動工具。這將確保所維修的電動工具的安全性。
- b) 請勿自行維修已損壞的電池組。電池組的維修應僅由原廠或授權服務商來進行維修。

砂布帶機的專用安全規則警告

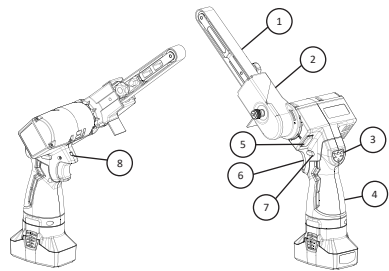
- 在進行操作時，切割配件可能接觸到隱藏的電線，請握住絕緣的握把表面來使用電動工具。切割配件接觸到「帶電」的電線可能會使電動工具的裸露金屬部分「通電」，並可能會使操作人員觸電。

- 請仔細閱讀本手冊，了解此電動工具的用途、限制，以及潛在危險。依指示作業可以降低人員觸電、引發火災或造成嚴重傷害。
- 在組裝零件、操作工具或進行維護時，務必佩戴符合 ANSI Z87.1 標準並帶有側面護罩的護目裝備。遵循此規則可降低發生嚴重人員受傷的風險。
- 如果操作過程中會有塵土飛揚的現象，請佩戴面罩或防護口罩來保護您的肺。依指示作業可以減少重傷風險。
- 如需長時間操作，請佩戴聽力保護裝置以保護您的耳朵。依指示作業可以減少重傷風險。
- 電池工具無需插入電源插座，因此隨時處於可操作狀態。在不使用電池工具或更換配件時，請注意可能的危險。遵守此規則可降低觸電、火災或嚴重人員受傷的風險。
- 請勿將電池工具或電池置於火源或高溫附近，以降低爆炸及潛在傷害的風險。
- 請勿擠壓、摔落或損壞電池組。若電池組或充電器會被摔落或受到重擊，請勿繼續使用。受損的電池可能會發生爆炸，應立即妥善處理已摔落或損壞的電池。
- 電池在遇到點火源(如指示燈)時可能會爆炸。為降低嚴重人員受傷的風險，請勿在有明火的环境中任何無線產品。爆炸的電池可能會噴射碎片和化學物質。如有接觸，應立即用清水沖洗。
- 電池工具請勿在潮濕或濕滑的場所充電。請勿在溫度低於 10°C 或高於 37°C 的環境中使用、存放或充電電池組或相關產品。請勿將其存放於戶外或車內。
- 在極端使用或溫度條件下，電池可能會漏液。若液體接觸到眼睛，請立即用清水沖洗至少 10 分鐘，並迅速就醫。遵守此規則可降低嚴重人員受傷的風險。
- 使用此工具前，請檢查並移除木材中的所有釘子。遵守此規則可降低嚴重人員受傷的風險。
- 妥善保存這些說明。經常參閱，並用於指導可能使用此工具的他人。如將此工具借予他人，亦應一併提供這些說明。
- 請握持電動工具的絕緣握持表面，因為打磨表面可能會接觸到其自身的電線。切割到「帶電」電線可能會使電動工具的金屬部件「帶電」，從而導致操作人員觸電。

規格

| 型號 | BS06457AZ | BS10330AZ | BS13457AZ | BS19457AZ | BS20520AZ |
|-----------------------------|---------------------------------|---------------------------------|---------------------------------|---------------------------------|---------------------------------|
| 尺寸(含電池) | 410mm | 349mm | 415mm | 415mm | 455mm |
| 重量(含電池) | 1.28Kg | 1.27Kg | 1.33Kg | 1.32Kg | 1.32Kg |
| 砂布環帶尺寸 (寬 x 長) | 6.5x 457 (mm) 1/4" x 18"(in) | 10 x 330 (mm) 3/8" x 13"(in) | 13 x 457 (mm) 1/2" x 18"(in) | 19 x 457 (mm) 3/4" x 18"(in) | 20 x 520 (mm) 3/4" x 18"(in) |
| 砂布環帶空轉轉速 (RPM no) | 20,000RPM | | | | |
| 砂布環帶每分鐘 空轉線切速度 (SFPM) | 4,353 SFPM | | | | |
| 電池電壓 | 14.4V d.c. | | | | |

功能描述



| | |
|--------|-----------|
| 1. 砂帶 | 5. 保護座調整鈕 |
| 2. 保護座 | 6. 扳機 |
| 3. 指示燈 | 7. 扳機鎖 |
| 4. 握把 | 8. LED 燈 |

組裝與說明

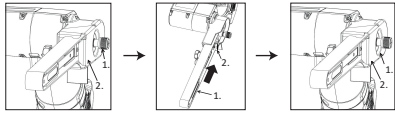
- ▲警告：為降低嚴重人身受傷風險，請在進行任何調整或拆卸/安裝配件時先將設備關閉且移除電池組。意外啟動可能會導致受傷。

移除/安裝電池

如要移除電池，請按下釋放鈕，再將電池組移除。如要安裝電池，將電池組插入工具。請確保電池已安裝完畢。

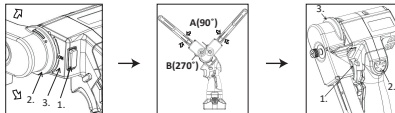
- ▲如要更換或移除配件，請先移除電池組。
- 請僅使用適用此工具的配件。
- 使用其他不相容之配件有危險之虞。

安裝/拆卸砂帶



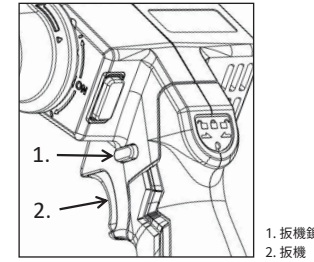
1. 固定螺絲
 2. 防塵蓋
- 鬆開固定螺絲，逆時針旋轉，然後按照箭頭的方向移除防塵蓋。
 - 向箭頭方向推動砂帶臂，直到聽到「卡」聲，這時砂帶會處於鬆開狀態。移除舊砂帶並安裝新砂帶。按下砂帶臂釋放鈕以釋放砂帶臂，並將砂帶置於固定狀態。
 - 按照箭頭的方向重新安裝防塵蓋，並順時針緊固固定螺絲以完成砂帶的更換。

調整砂帶臂傾斜角度



1. 保護座調整鈕
 2. 砂帶臂保護座
 3. 角度調整範圍
- 調整保護座角度時，按下保護座調整鈕並調整至所需角度。
 - 調整到目標位置後，放開調整鈕，並微調至調整鈕自動彈起，即完成調整。
 - 角度調整範圍為 360°，每個定位點的角度位移為 30°。啟動範圍 A(90°)，非啟動範圍 B(270°)。調整角度以達到舒適的工作位置。
 - 當砂帶臂保護座處於非安全啟動角度時，按下扳機會使指示燈顯示紅色，提醒使用者調整砂帶臂保護座至安全的角度。

扳機鎖



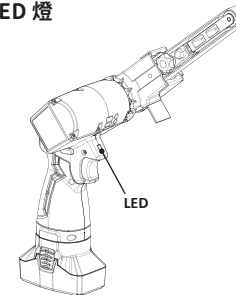
▲警告：為保障您的個人安全，本工具配備有扳機鎖，可防止本工具意外啟動。若工具可在僅扣動扳機而未釋放扳機鎖的情況下運行，請勿使用工具。在繼續使用工具前，請將其攜至授權維修售服中心進行修繕。

▲注意：將電池組裝入工具前，請務必確認扳機是否正確作動，且釋放後能夠回到「OFF」(關閉)位置。操作扳機無法正常作動的工具會導致工具失控及嚴重的人員受傷。

按下扳機鎖以在鎖定(🔒)模式和解鎖(🔓)模式之間切換。當處於鎖定模式(🔒)時，按下扳機無法啟動工具；而在解鎖(🔓)模式下，按下扳機可啟動工具。

如欲啟動工具，扣動扳機。如欲讓工具停止，請鬆開扳機。

點亮 LED 燈

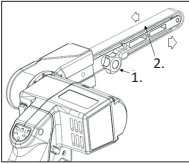


▲注意：不要直視燈光或光源。
扣動扳機，即可點亮 LED 燈。若要關閉此燈，請釋放扳機。釋放扳機大約 10 秒後，燈會熄滅。

操作

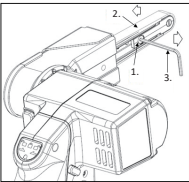
- ▲警告：為減少嚴重人員受傷的風險，請在進行任何調整或拆卸/安裝附件或配件之前，關閉設備並移除電池組。意外啟動可能會造成傷害。
- ▲注意：確保在開啟或關閉工具之前，砂帶的任何部分不接觸到工件表面。否則可能會導致砂磨效果不佳、砂帶損壞或工具失去控制。
- ▲注意：在操作過程中，避免身體接觸到砂帶和工具的旋轉零件。確實注意周圍環境及旁觀者，並保持警惕以防潛在危險。
- ▲注意：請勿嘗試將工具倒置操作。這可能會造成嚴重事故，導致人員受傷。

校正砂帶



1. 塑膠頭螺絲
2. 砂帶

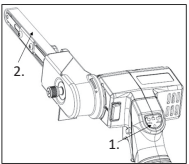
當工具 BS13457AZ、BS06457AZ 或 BS19457AZ 運行時，轉動塑膠頭螺絲可將砂帶向左 (或向右) 移動，以調整到正確位置進行校準。



1. 角度調整鈕
2. 砂帶
3. Hex key(2mm)

當工具 BS10330AZ 運行時，使用 2mm 內六角扳手旋轉並調整螺絲，將砂帶向左 (或向右) 移動，調整到合適位置完成校正。

指示燈



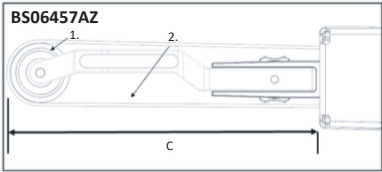
1. 指示燈
2. 砂布帶

當指示燈閃爍時，請依照以下指示進行操作：

- 閃爍一次: 電池電量低，請更換電池。
- 閃爍兩次: 請將工具靜置幾分鐘後再啟動。
- 閃爍三次: 調整工具的工作位置後重新啟動。
- 無閃爍: 若工具無法啟動，請將工具切換至鎖定模式，嘗試轉動砂布帶後再重新啟動。
- 若重複以上步驟後仍無法啟動，請送修進行檢查。

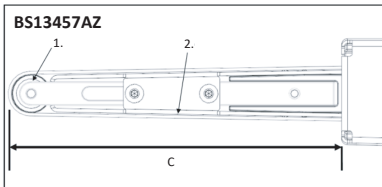
砂帶打磨範圍

啟動工具，等待其達到全速後，再用一隻手穩握工具。輕輕將工具接觸工件表面，並前後移動工具以進行打磨。



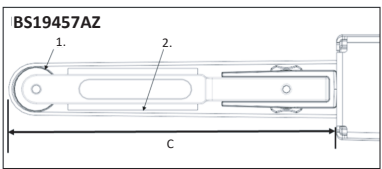
1. 前皮帶輪 2. 砂帶打磨區

前皮帶輪與研磨區為工具設定了打磨工件位置，請在範圍 C 內打磨工件。



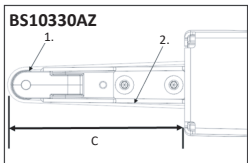
1. 前皮帶輪 2. 平面座

前皮帶輪與平面座為工具設定砂磨工件位置，請在範圍 C 內砂磨工件。



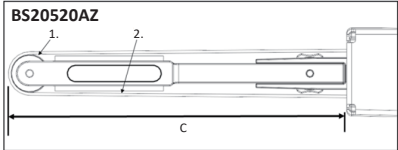
1. 前皮帶輪 2. 平面座

前皮帶輪與平面座為工具設定砂磨工件位置，請在範圍 C 內砂磨工件。



1. 前皮帶輪 2. 平面座

前皮帶輪與平面座為工具設定砂磨工件位置，請在範圍 C 內砂磨工件。



1. 前皮帶輪 2. 平面座

前皮帶輪與平面座為工具設定砂磨工件位置，請在範圍 C 內砂磨工件。

電池規格&安全使用事項

| EB14020-A1 | |
|------------|---------------------------------|
| 額定電壓 | 14.4V |
| 額定容量 | 2Ah |
| 電池類型 | 鋰電池 |
| 尺寸 | 長 x 寬 x 高 89 x 60 x 105 (mm) |

- 請勿將電池燒掉，也不要將電池拿去加熱。
 - 請勿拆卸或重組電池組。
 - 請勿將電池放在高溫的地方 (60°C或以上)。
 - 請勿讓電池受潮或碰水。
 - 請勿讓電池受到大力撞擊，也不要讓電池落地。
 - 請勿直接將鉛焊接到電池本體。
 - 請勿加熱或焊接電池的端子。
 - 請勿使電池正、負端子短路。
 - 請遵守運送規則上所述的條件。
 - 請勿反向充電或逆向連接電池。
 - 充電時，請用 EC1412-A1 專用電池充電器。
 - 請定期檢查電池容量。當電池的電壓低於開路電壓時，電池容量可能會下降且無法恢復。
 - 如果電池放置時間超過3個月，應再次檢查剩餘容量並為電池充電。
- 備註：請參閱電池規格說明書。**


充電器規格與安全使用事項

| 電池充電器規格 | |
|---------|---------------|
| 充電器 | EC1412-A1 |
| 電池模式 | EB14020-A1 |
| 輸出電壓 | 16.6V |
| 保護等級 | 觸電防止保護等級II |
| 交流供電電壓 | 100VAC~240VAC |
| 主要頻率 | 50Hz~60Hz |
| 作業溫度 | 0°C 至 45°C |
| 儲存溫度 | -20°C 至 70°C |

| 充電狀態指標 | | | |
|--------|------------------|-------------|-------------------------|
| | 狀態 | LED紅燈 | LED綠燈 |
| 1 | 待機模式 | 關閉 | 閃爍 (0.5秒開， 0.5秒關) |
| 2 | 電池組安裝 和充電 | 開啟 | 關閉 |
| 3 | 定電壓 (CV) 充電模式 | 關閉 | 閃爍 (0.1秒開， 0.1秒關) |
| 4 | 定電流 (CC) 充電模式 | 開啟 | 關閉 |
| 5 | 充電完成 | 關閉 | 開啟 |
| 6 | 溫度保護 | LED 紅燈閃爍 | |
| 7 | 異常保護 | LED 紅、綠燈皆亮起 | |

電池充電器安全使用事項

- 請保持工作區乾淨且明亮。雜亂或黑暗的区域容易發生意外。
- 請勿在易爆炸環境中充電，例如存有易燃液體、氣體或粉塵的環境。充電過程會產生火花，可能引燃粉塵或煙霧。
- 充電時，請讓兒童和人群遠離充電區域。
- 電源線插頭需與插座相匹配。請勿使用以任何方式改造的插頭。相應的插頭和插座可降低觸電風險。
- 避免身體與接地的表面(如管道、散熱器、爐具和冰箱)接觸。如果身體接地，會增加電擊危險。
- 不得以錯誤方式使用電源線。請勿使用電源線進行搬運、拉扯或拔出電動工具。電源線應遠離熱源、油、鋒利邊緣或活動部件。損壞或纏繞的電線會增加觸電危險。
- 請僅於乾燥的地方進行充電。電器受潮會增加觸電風險。
- 僅使用原廠出品對應的充電器為對應的電池充電。
- 請勿使用缺陷損壞的充電器或電源線。
- 充電器未使用時，請放置於兒童拿不到的地方。請勿讓不熟悉此設備或本說明書的人操作，以免發生危險。
- 請小心維護保養此產品。檢查確保沒有任何零件損壞或損毀以至於無法正常運轉。如果有損壞，請在使用前送修完畢。
- 請依照本說明使用充電器和相應電池，並且符合此型號之規定。以免使用不相容的充電器導致發生危險。
- 僅使用原廠指定的充電器進行充電。適用於一種電池組的充電器，若用於其他電池組，可能會引發火災風險。
- 不使用時，請將電池和充電器遠離迴紋針、硬幣、鑰匙、釘子、螺絲或其他可能導致電池端子或充電接觸點短路的小金屬物體。電池端子或充電接觸點的短路可能導致人身傷害(燒傷)或引起火災。
- 在不當使用情況下，電池可能會釋放液體；請避免接觸。如不慎接觸，請用水沖洗。如液體接觸眼睛，請立即就醫。電池釋放的液體可能會引起刺激或灼傷。
- 請確保充電器放在穩定、安全的位置。不當擺放電池或充電器造成掉落可能會對您或他人造成傷害。
- 避免觸碰接點。
- 為避免環境污染，請務必妥善地處理廢電池。

- 身體、感官或心智能力受限、缺乏經驗和知識的人(包括兒童)不適用本產品，除非他們在監督或指導之狀況下使用之。
- 請教育兒童不應隨意把玩此產品。
- 請小心確保電池不受機械損傷。
- 請勿充電或繼續使用損壞的電池(例如有裂痕、破損、彎曲或壓入或拉出接點的電池)。
-  在工作時，如果電源線或延長線損壞，請勿觸碰。請將電源線插頭拔掉。損壞的電源線或延長線可能會使您觸電。
- 請勿在使用髒污或受潮設備。在不當情況下，附著在設備表面上的水氣或灰塵，尤其是導電材料上的灰塵，可能會造成觸電風險。因此，有髒污或灰塵之設備應定期送去服務中心進行檢查，尤其是在頻繁使用導電材料之設備。

維護保養

- ▲ 為了降低傷害風險，在進行任何維護保養工作前，請務必拔掉充電器插頭並將充電器或工具的電池組移除。請勿拆解工具、電池組或充電器。聯絡售服中心進行所有維修。
- 通過定期維護計劃，保持工具、電池組和充電器處於良好狀態。
- 檢查工具是否存在異常噪音、活動零件對不準或卡住、零件破損或任何其他可能影響工具操作的情況。
- 將工具、電池組和充電器送回售服中心進行維修。
- 如果工具在使用充滿電的電池組時無法啟動或無法全力運行，請清潔電池組上的接觸點。
- 如果工具仍然無法正常運作，請將工具、充電器和電池組送回售服中心進行維修。
- ▲ 警告：為了降低傷害和損壞率，請勿讓工具、電池組或充電器泡水或受潮。
- 清理通風口的灰塵和木屑。
- 保持握把清潔、乾燥，並無油脂或潤滑劑。
- 僅使用溫和的肥皂和濕布進行清潔，因為某些清潔劑和溶劑對塑料和其他絕緣零件有害。
- 這些清潔劑包括汽油、松節油、清漆稀釋劑、油漆稀釋劑、含氯清潔劑、氨水以及含氨的家庭清潔劑。
- 請勿在工具周圍使用易燃或可燃的溶劑。

維修

如需維修，請將工具、電池組和充電器送至最近的售服中心。

故障排除

| 異常提示 | 可能異常原因 | 處理方式 |
|-------------------------------------|--|---|
| 持續閃爍一次 | <ul style="list-style-type: none">■ 低電池電壓保護 | <ul style="list-style-type: none">■ 充電或更換電池 |
| 持續閃爍兩次 | <ul style="list-style-type: none">■ 工具電池溫度保護■ 工具馬達溫度保護■ 工具控制電路保護 | <ul style="list-style-type: none">■ 取出電池，等待溫度恢復後再重新安裝電池 |
| 持續閃爍三次 | <ul style="list-style-type: none">■ 工具短暫過載 | <ul style="list-style-type: none">■ 釋放扳機，然後再次按壓。如果問題仍然存在，請聯絡售服中心。 |
| 工具無法正常運作且電池狀態顯示燈未閃爍。 | <ul style="list-style-type: none">■ 工具馬達控制異常 | <ul style="list-style-type: none">■ 釋放扳機並移除電池。輕輕將砂帶在工件上按壓，來回移動。插入電池後，按下扳機。■ 若問題仍然存在，請聯繫售服中心。 |
| 若出現上述情況以外的故障，請立即停止使用工具並聯繫當地經銷商尋求服務。 | | |

電話:+886-4-2359-8877
地址:臺中市工業區36路24號